

CHUBB®

IDP Learning Fest 2023

Financial Lines

Product Overview

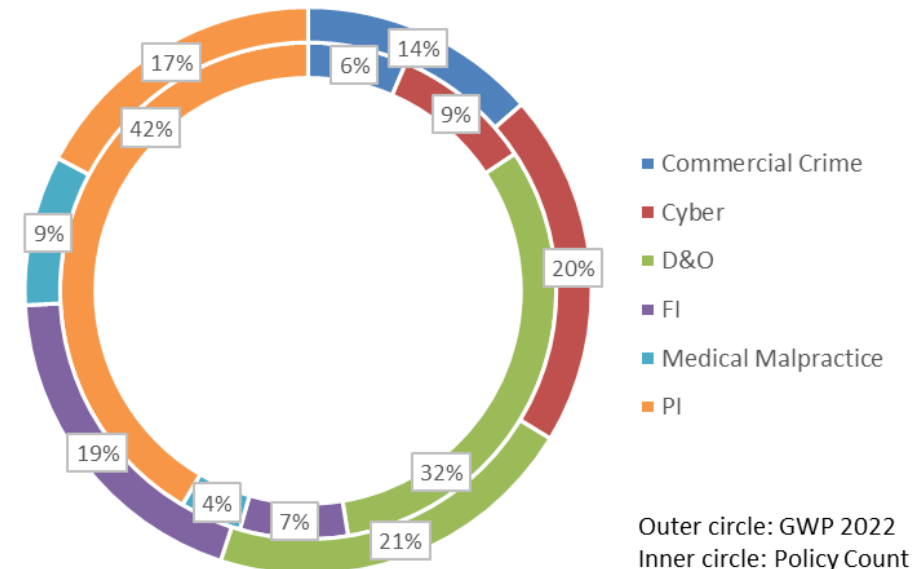
Chubb Elite (CORE Products)

- D&O (Including POSI)
- PI (Miscellaneous Wording & Architect and Engineers Wording & SPPI)
- Association Liability
- School Liability
- Medical Malpractice
- Cyber
- Crime
- Financial Institutions Product Suite (IMI, PEVC, FI PI, FI D&O, BBB/ECC)

Chubb Prime+ (SME Products)

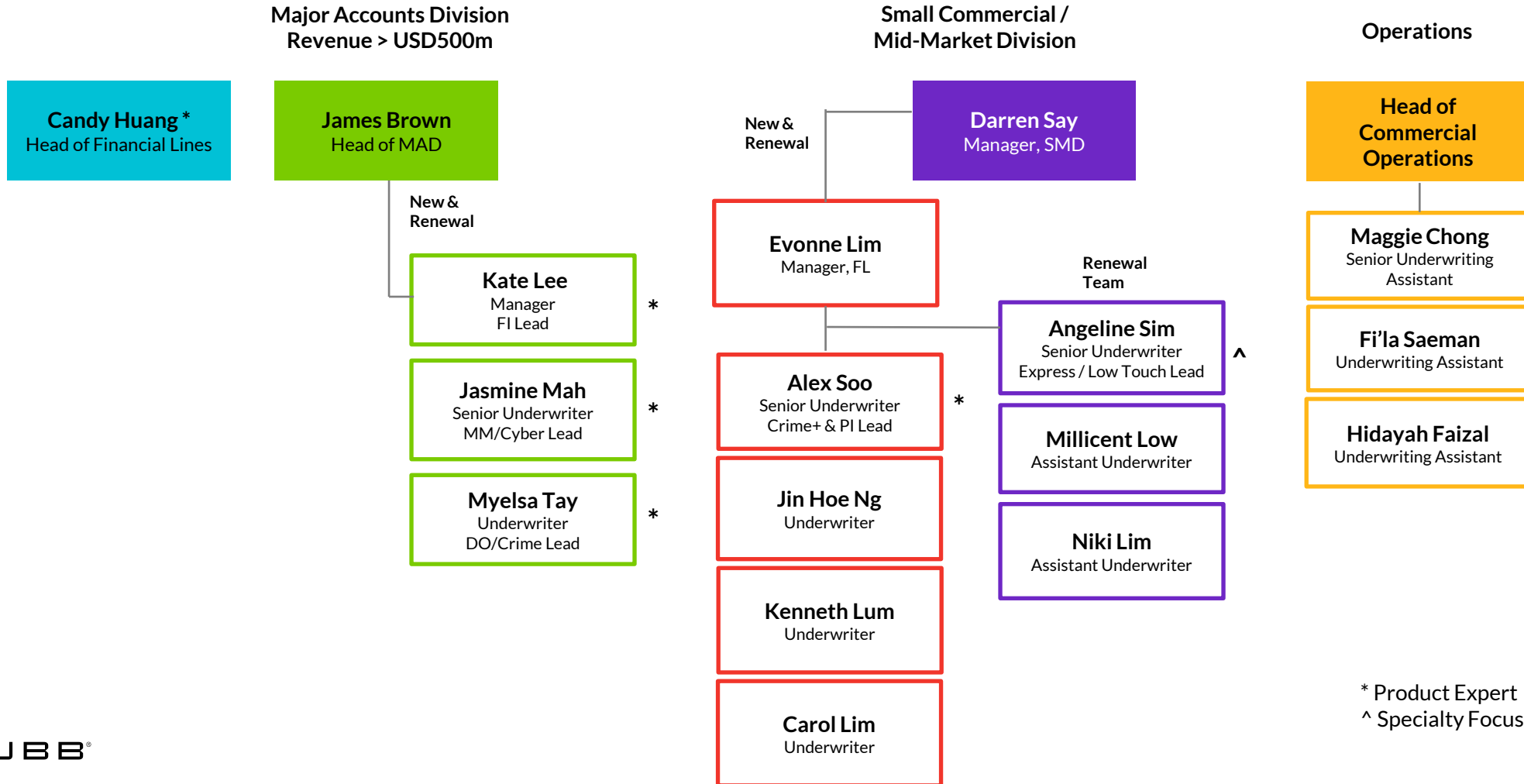
- D&O
- Management Liability
- PI (Accountants, Consultants, D&E, IT PI)
- Association Liability
- Educators Liability

Portfolio by Product



Financial Lines Team

12 Underwriters



State of the Global Cyber Market

\$12.8B USD in premium

Chubb ~10% Market Share

Ransomware and Business Email Compromise

Shift from Prevention to Resilience

\$10.5T USD in annual cybercrime damages by 2025

13,000 new software vulnerabilities

Systemic Risk

Product Structure

Cyber ERM2.2

Core Coverage

First Party:

- Incident Response
- BI and Recovery
- Cyber Extortion

Third-Party:

- Privacy and Network Security Liability
- Media Liability

Extensions and Endorsements

- Regulatory Fines
- Cyber Crime
- PCI Fines
- Ransomware
- Other coverage extensions

Underwriting Expectations

We expect insureds are proactively engaged in their cyber risk management.

Multifactor Authentication (MFA)

Is multifactor authentication in use for all remote access, email access and privileged account access?

Privileged Account Management tools (PAM)

How does the client track admin accounts on the network (those with higher levels of privilege)?

Endpoint Detection & Response (EDR, XDR, MDR)

Are EDR/XDR/MDR tools in use on all endpoints?

Network segmentation, particularly around Operational Technology

How is lateral movement prevented on the network?

Is the OT environment isolated from the IT environment?

Strong Backup Practices

How and how often is data backed up?

Is operational recovery from back ups tested as part of risk management exercises?

Patching Cadence

How are software vulnerabilities tracked?

What is the timeline for patching vulnerable software?

Appetite

Our appetite is broad and dictated more by controls than industries.

Extremely Selective

- Political Risks
- Crypto & ICO
- Digital Wallets
- Financial Exchanges
- Data Aggregators
- Social Media
- Adult Content
- Coal Operations
- Airlines & Airports
- MedTech
- Critical Infrastructure
- Pipelines
- Weapons Manufacturing
- Port Operations
- Direct Suppliers of Oil, Gas, or Energy

Selective

- Aluminum Manufacturers
- Fertiliser Manufacturers
- Gem/Precious Stone Mining or Manufacturing
- International Shipping & Logistics
- Technology Services with Products in Russia, Belarus, or Ukraine
- Sanctions Consulting Firms
- Law Firms with Sanctions Compliance Practices
- Humanitarian Aid, NGO, or Political Organisations with involvement in Russia, Belarus or Ukraine
- Technology Providers Focused on Oil & Gas
- Content Moderation Services

Ransomware Controls In-Focus

- Manufacturing
- Professional Services
- Utility/Energy/Oil & Gas
- Transportation & Logistics
- Public (Government) Entities
- Education (University & Research University)

Chubb. Insured.SM

©Chubb. All rights reserved. This presentation contains trademarks that are the property of Chubb and may contain other trademarks that are property of their respective owners.

Chubb is the marketing name used to refer to subsidiaries of Chubb Limited providing insurance and related services. For a list of these subsidiaries, please visit our website at www.chubb.com. Insurance in different jurisdictions is provided by various subsidiaries licensed in such jurisdictions. All products may not be available in all jurisdictions and coverage is always subject to the language of the policies issued. This material does not constitute legal or financial advice, or a warranty of any kind to any party and no liability is assumed by reason of the information in this presentation.